



AUTOMATE

Your
International Partner
In Process
Automation And
Control Solution.

Automate International (Pvt.) Ltd.



Vision

To become the leading company in the field of Industrial Automation and Control to meet the client needs by providing customer driven, cost effective and quality solutions.

Mission

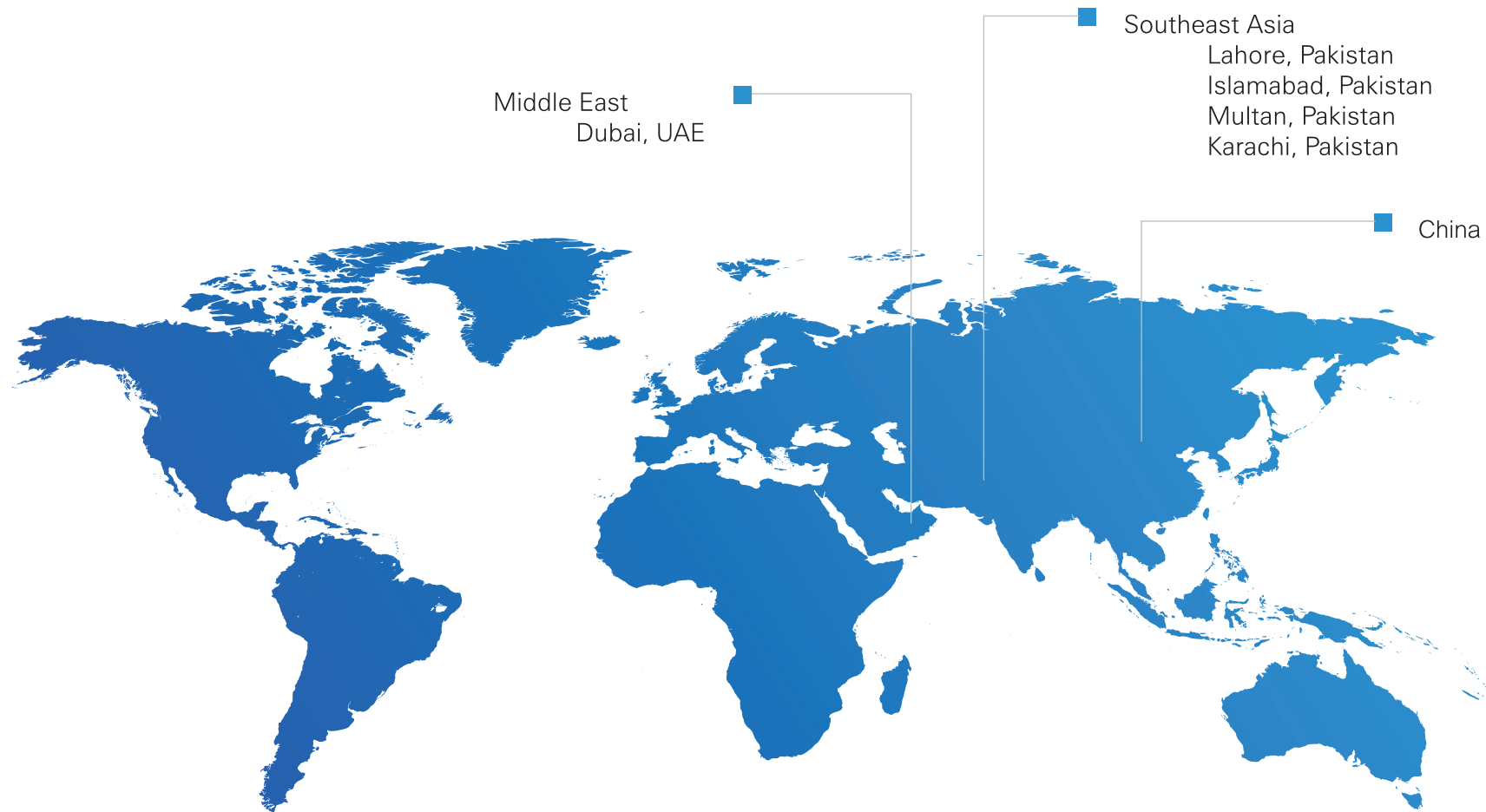
- To exceed customer expectations by offering quality products, innovative services, product applications, and execution of Electrical Instrumentation and control projects on turnkey basis while staying within the funds allocated for the project
- To provide our employees with healthy, transparent, enjoyable and rewarding working environment
- To enhance the value of the firm through profitable joint ventures
- To serve the society by participating in welfare programs

Automate International is driven by the desire to always be helpful. We observe, we analyze, we inspire, we engineer with an intense focus on every last detail.

We operate with simple yet powerful manifesto: That intelligent automation isn't just about movement its movement with purpose, and it's not just about innovative products, its products that come with expert advice and differentiated customer support.

Our aim is to help our customer make their products faster, smarter and more precisely when our customer win, we win.

Global Existence



Middle East
Dubai, UAE

Southeast Asia
Lahore, Pakistan
Islamabad, Pakistan
Multan, Pakistan
Karachi, Pakistan

China

28⁺ years of
commitment

100⁺ medium and
large scale projects

100⁺ employees

17⁺ Industrial
Segments Served

10⁺ key partners
worldwide

50⁺ Government and
blue chip customer

6 Offices 2 Operating Centers

20⁺ Control System
Engineers

Instrumentation



- Analytical Instruments & Sensors
- Panel Mounted Controllers
- Final Control Element
 - Pneumatic Valves
 - Electric Valves
- Process Instruments
- Pneumatic & Hydraulic Instruments
- Programmers/Recorders and Data Acquisition



Automation & Control



- PLC Based Control System
- DCS Based Control System
- Emergency Shutdown System (ESD)
- Automatic Transfer System
- Tunnel Ventilation System (TVS)
- Environmental Control System (ECS)
- Plant Information Management System (PIMS)



Power Division



- LV Switchgear Product
- LT Panels
- MCC - Motor Control Center Panels
- PLC/DCS Control Panels
- PFI - Power Factor Improvement Panels
- AMF/ATS - (Auto Transfer Switch)
- VFD Control Panels
- Light Distribution Panels
- Synchronization Panels
- IT Panels



Mechanical Division



Fabrication

- Welding
- Field Installation
- Pipe Fabrication
- Mechanical Construction
- Sheet Metal Fabrication

Erection

- Erection of Steel Structure
- Erection of Piping / Pipe Racks
- Erection of Tanks
- Erection of Water Supply System
- Process Piping & Vessels



HVAC & Building Control

- Cooling Tower and Chillers
- Orifice Plates
- Fabric Ducting
- Air vents and diffusers
- SS and MS pipeline working
- Main Chilled Water
- Microclimate pipe runs
- Fitting AHUs, chilled water pumps
- Install FCUs, CCUs, Dampers, Fan
- Fitting of gauges, labels ID bands



Engineering Services

- Site Installation and Testing
- Site commissioning
- Automation, Instrumentation
- Electrical & Mechanical Services
- Field Calibration Services
- After Sales Support
- SS and MS Pipelines Work
- Cable Tray and Conduit Work
- Machines Installation Commissioning
- Pneumatic Piping Work



Schneider
Electric

ABB

Honeywell

YOKOGAWA ◆

SIEMENS

BECKHOFF

Fire & Gas System

- Flame Detectors
- Gas Detectors
- Smoke Detector
- Oxygen Detector
- Gas Leak Detector
- Controllers
- Surveillance System



Spare Parts Management



Under Spare Parts Management, we do establish a system between AIPL and our esteemed customer to provide a direct way to inventory and ship spares before you need them. From PLC to HMI, software to hardware, cables to sensors, breakers to power supplies, valves to actuators, fasteners and even bolts etc.

Spares optimization and management is an effortless way for you to never to have to wait days for a part after something breaks or is lost.

Packaging Solution



- Carton Erector
- Carton Filling Machine
- Carton Wrapping Machine
- Carton Sealing Machine
- Carton Strapping Machine
- Wireless Point Check Management System
- Production Line Wireless Public System
- Shrink Wrapping Machine
- Bottle Filling Machine
- Bottle Capping Machine
- Filling and Sealing
- Weighing Machine
- Labeling Machine
- Packing Production Line
- Robot Automatic Packing System
- Vertical Bags Automation
- Pillow Type Bags Automation
- Horizontal Bags Automation
- Bottles Packaging Line
- Box Type Automation
- Bottles, Box Mixed
- Milk Cans and Bags
- Conveyor Series

MEP Services

MECHANICAL



- Mechanical Construction
- Sheet Metal Fabrication
- Power Panels Fabrication
- Welding & Fabrication
- Field Installation
- Pipe Fabrication
- Pressure Vessels
- Steel Tanks, Free Stalls
- Head Catchers

ELECTRICAL



- LV Switchgear
- Cable Tray System
- Bus-bar Systems
- Lighting Control Systems
- Power Management
- Systems
- Grounding (Earthing)
- Lightning Protection
- Power and Control Cabling

PLUMBING



- Industrial Pipes Plumbing
- Domestic Cold Water
- Domestic Hot Water
- Water Treatment
- Sanitary Drain
- Process Drain & Treatment
- Remodeling
- New Construction
- Grey Water Collection & Reuse

Automation & Control



PLC SYSTEM

Rockwell/Allen Bradley

| PLC5 | SLC500 | Micro Logix |
| Compact Logix | Control Logix |
| Studio 5000 Logix Designer |

Siemens

| Simatic S7-1200 | Simatic S7-1500 |
| Simatic S7-300 | Simatic S7-200 |
| Simatic S7-400/400H/400F/400FH |

DCS SYSTEM

SUPCON

| XP300 | ECS100 | TCS900 | ECS700 |

YOKOGAWA

| Centum CS3000 | VP |

Honeywell

| EPKS R400/R410/R430 |
| With C200/C200E & C300 |

Emerson

| Delta V |

Siemens

| PCS7 |

SCADA/HMI System

Siemens

| SIMATIC WinCC Professional |
| SIMATIC WinCC V7

Rockwell

| FactoryTalk RS View/ RSVIEW32 |

Wonderware / AVEVA

| FactoryTalk RS View/ RSVIEW32 |
| Intouch | AVEVA™ Edge |

Schneider

| Geo SCADA Expert |
| OPC Factory Server |

Honeywell

| Experion® SCADA | EPKS |

ABB | ABB Ability SCADA Advantage |

YOKOGAWA | SCADA Software (FAST/TOOLS) |

AUTOMATE

AUTOMATE

Authorized “System Integrator Partner” SIEMENS *Ingenuity for life*

For Digital Industry portfolio for the following:

- Factory Automation
- Process Automation
- Automation Systems
- HMI Control & Monitoring
- Identification & Locating
- Industrial Communication
- Industrial Controls
- Industrial Edge
- Industry Software
- PC-Based Automation
- Process Control Systems
- Process Instrumentation
- Process Analytics
- SITOP Power Supply
- Products for Specific Area
- Drive Technology



Extra-Ordinary Services

Automation Division is recognized as system integration solutions provider with portfolio of diversified products and field services in Pakistan by serving all major industrial sectors.



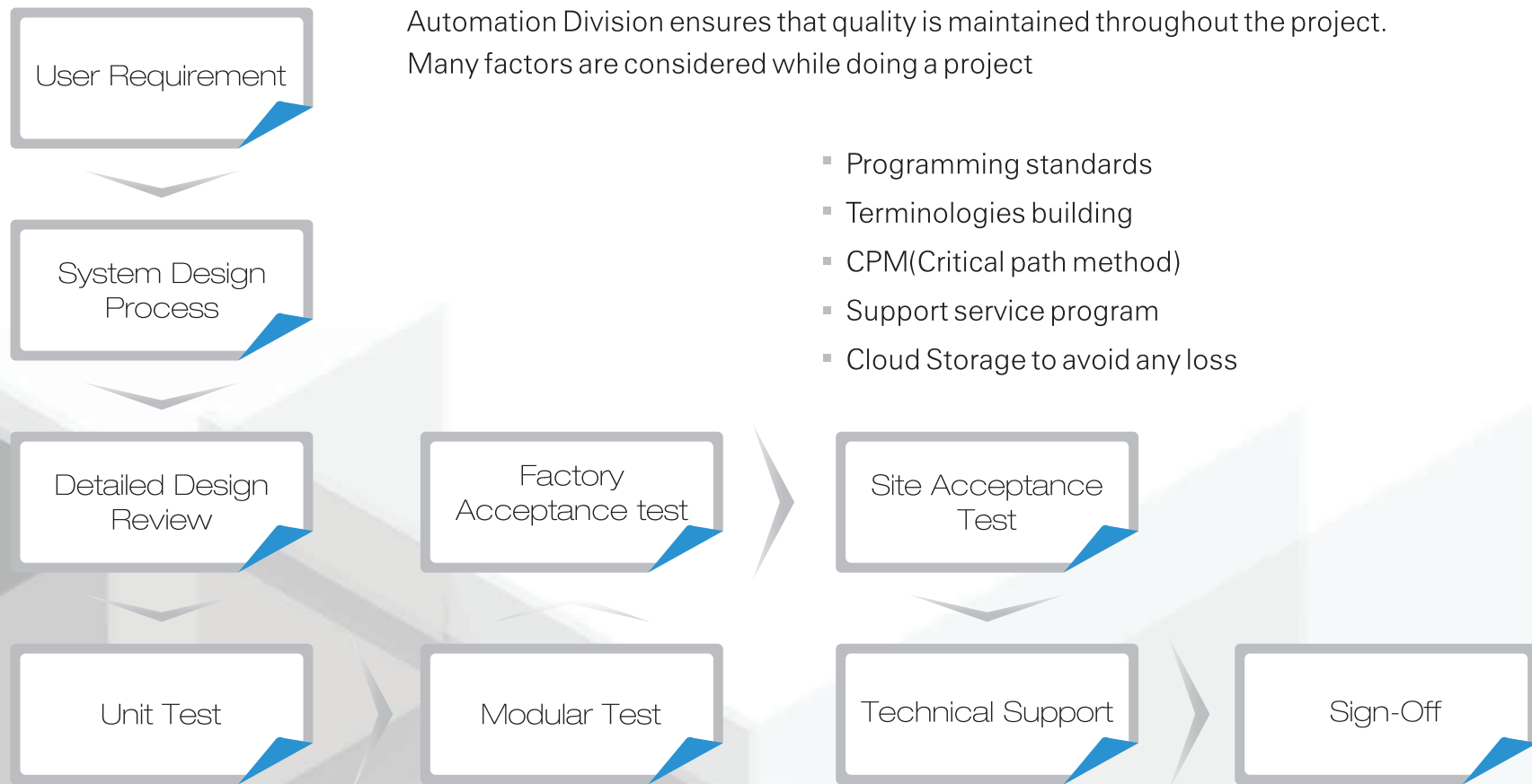
- 24/7 365 technical support.
- No Late Deliveries.
- Creative and Unique Solutions.
- Back-up support.
- Multi Channel Support.
- Field Commissioning.
- Emergency Field Service.
- Instrumentation Calibration.

Flawless Solution

Automation Division helps you in every step of Project management. Our capabilities include all aspects of automation system design and development, fabrication, assembly, and testing. We have expertise in many field.

- Emergency Shutdown Systems [ESD]
- Tunnel Ventilation systems [TVS]
- Environmental Control Systems [ECS]
- Plant Information Management Systems [PIMS]
- Process Automation & Control Services
- Automatic Transfer Systems
- Burner Management Systems
- Fire & Gas Detection Systems
- Energy optimization solutions
- SCADA Systems, Business KPI Dashboards, and ERP Connectivity

Project Management Ethics



Win-Win Condition

In automation division customer satisfaction plays a vital role. Customer Satisfaction is ensured by

- Superior service and support excellence
- Professional, innovative and expert guidance
- Having a plan and option for post project support



Success Stories

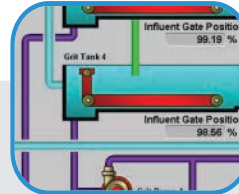
Automation



Automation of Pallet Tagging
Applicator Siemens S7-300
PLC Integration with
UBS-France Tag Applicator
System S7-1200 - Coca Cola



Multiline Automatic Sachet
Collator Machine – Unilever



SCADA Based System for Oil
Station Siemens 7-1200 with
WinCC Flexible - Askari Cement



Water Softener Plant Automa-
tion Rockwell ControlLogix with
FLEX - Nestlé

Instrumentation



Flow, Level, Temperature &
Pressure Control Project - POF



Level, Flow & Temperature
Monitoring for Water Saving
Project - Nestlé



Steam Control Valve with
Electric Actuator - PTC



Turbidity Monitoring System for
Water Saving Project - Nestlé

Electrical



Control Cabinets for Ketchup Plant - Unilever



ATEX Lighting Project (Explosion Proof Lights) Chalmit Lighting, UK - Unilever



Ergonomically Appropriate Battery Tugger for Lifters Nestlé



Juice Pasteurizer Control Panel Rockwell MicroLogix PLC System - Tetra Pak

Mechanical



SS Tubing Job for AGRON - I & II - Nestlé



Vacuum Based Bag Lifting Mechanism – Nestlé

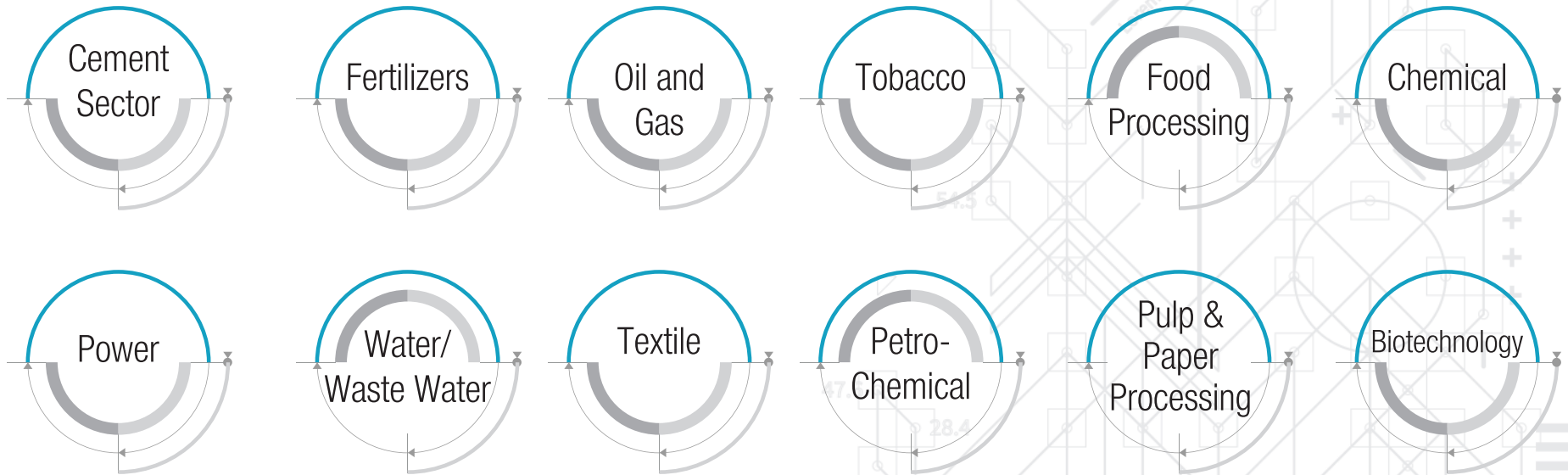


Cargo Lifting Mechanism for High Hygiene Area – Nestlé

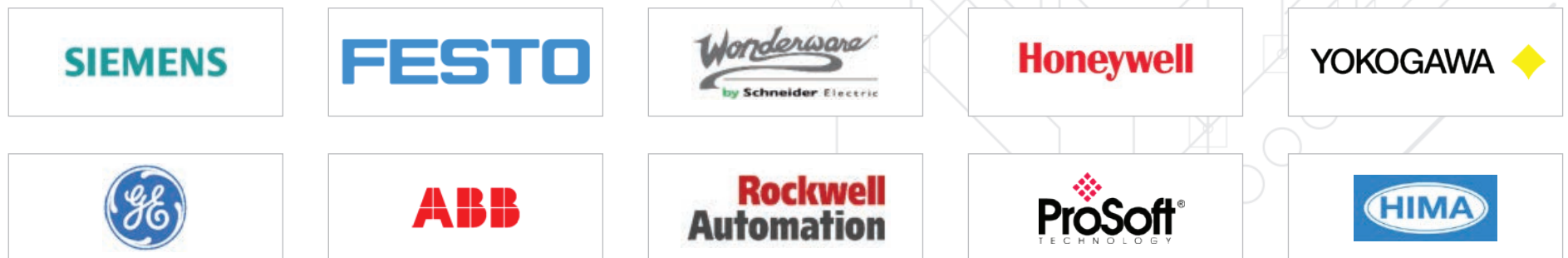


UV Based Disinfectant Conveyor System – Nestlé

Industrial Sectors



Brands



ISO Certifications

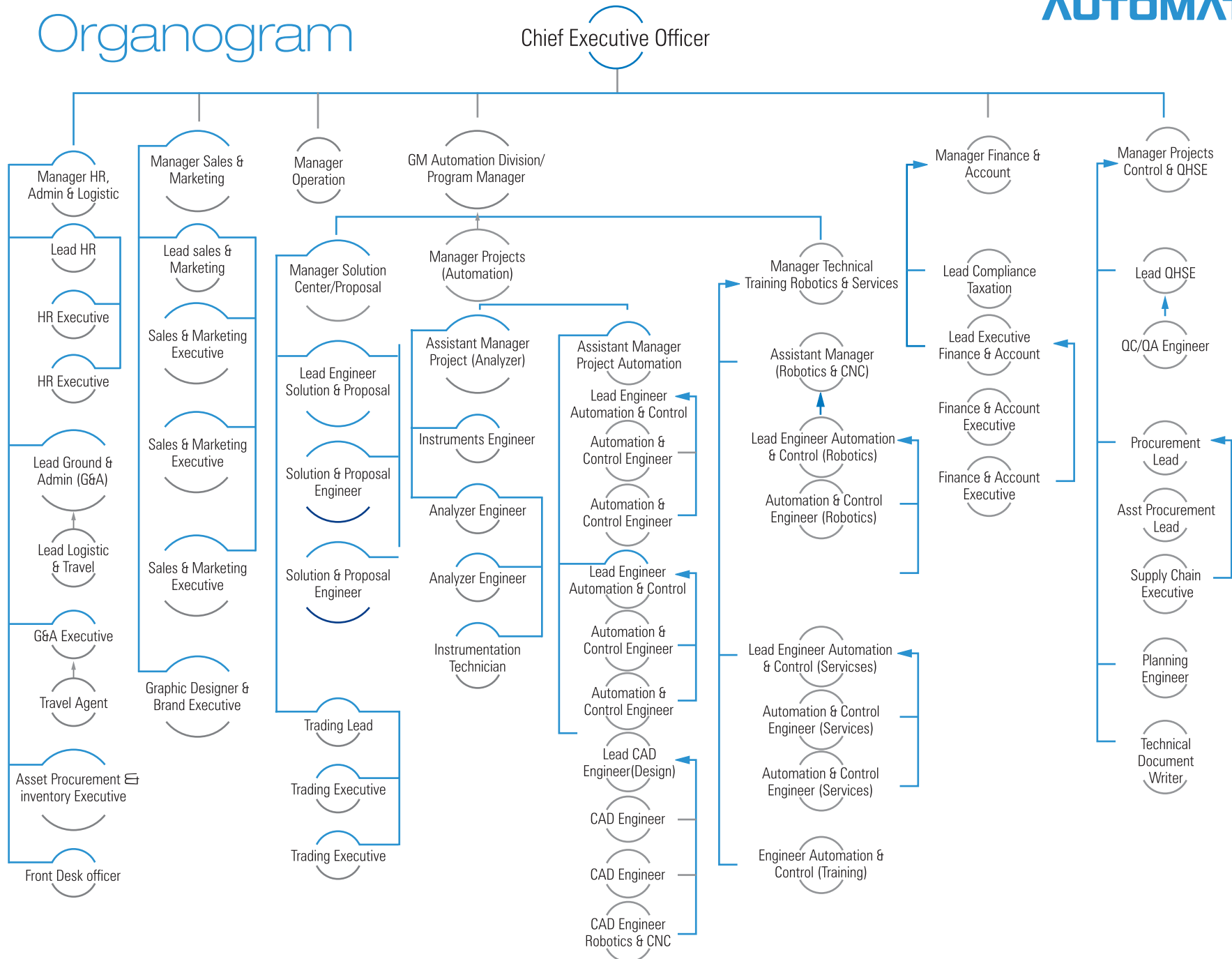
ISO certification in Integrated Management System from TUV Austria

- QMS ISO-9001:2015 Quality Management System
- EMS ISO-14001:2015 Environmental Management System
- QHS ISO-45001:2018 Occupational Health & Safety Management System



Organogram

AUTOMATE





AUTOMATE

Automate International (Pvt) Ltd.

Pakistan

Head Office:
140- Ahmed Block Garden Town,
Lahore - Pakistan.
Tel: +92-42-3586-3147
Fax: +92-42-3586-5192



Karachi

Multan

Islamabad

Middle East

Dubai, UAE

China

www.automateinternational.com.pk
info@automateinternational.com.pk